

Picnic Tote Pattern

by Caroline Fairbanks-Critchfield

Center Panel

cut 2 on fold from exterior fabric

place this

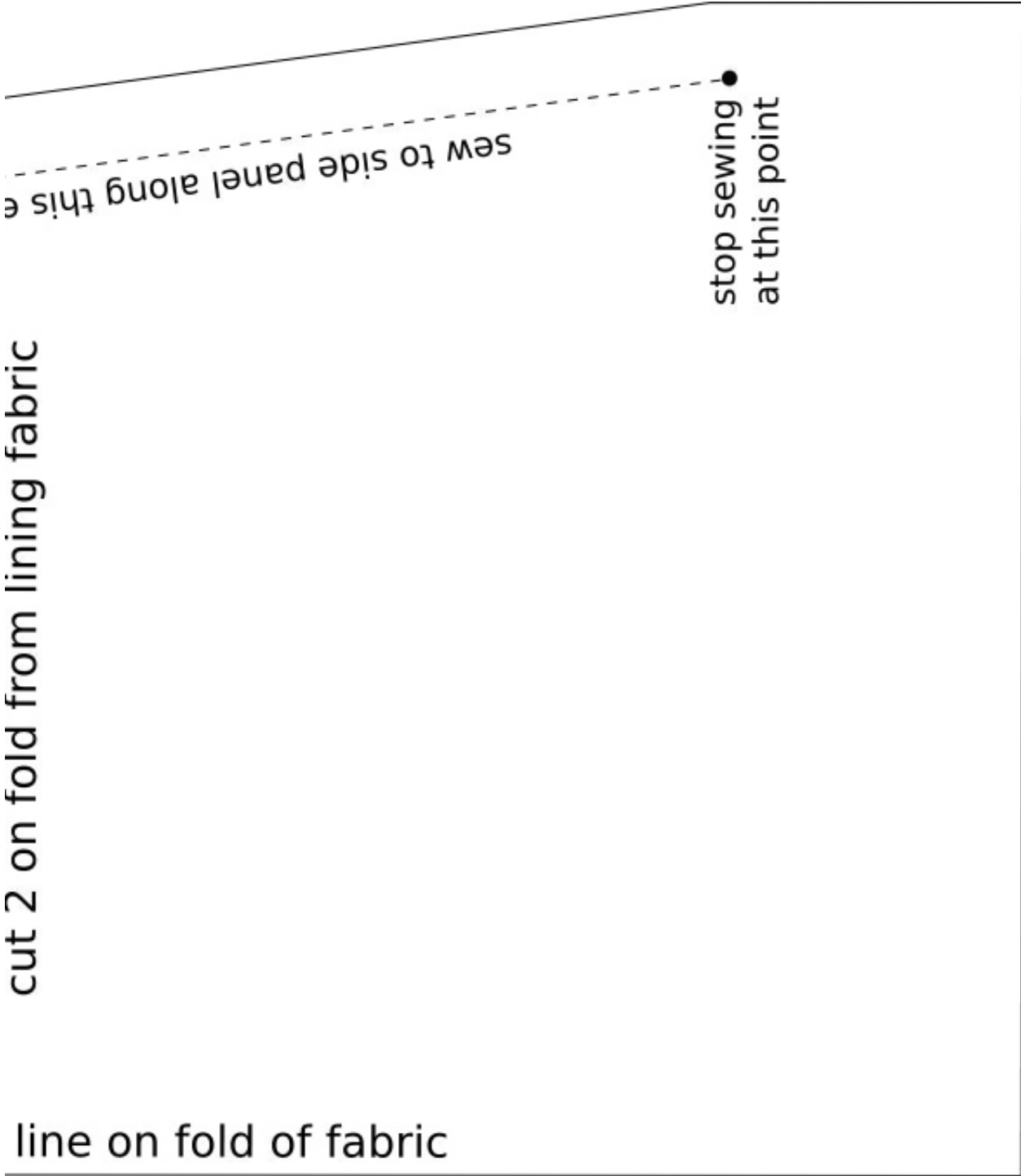
edge

cut 2 on fold from lining fabric

line on fold of fabric

sew to side panel along this e

stop sewing ●
at this point



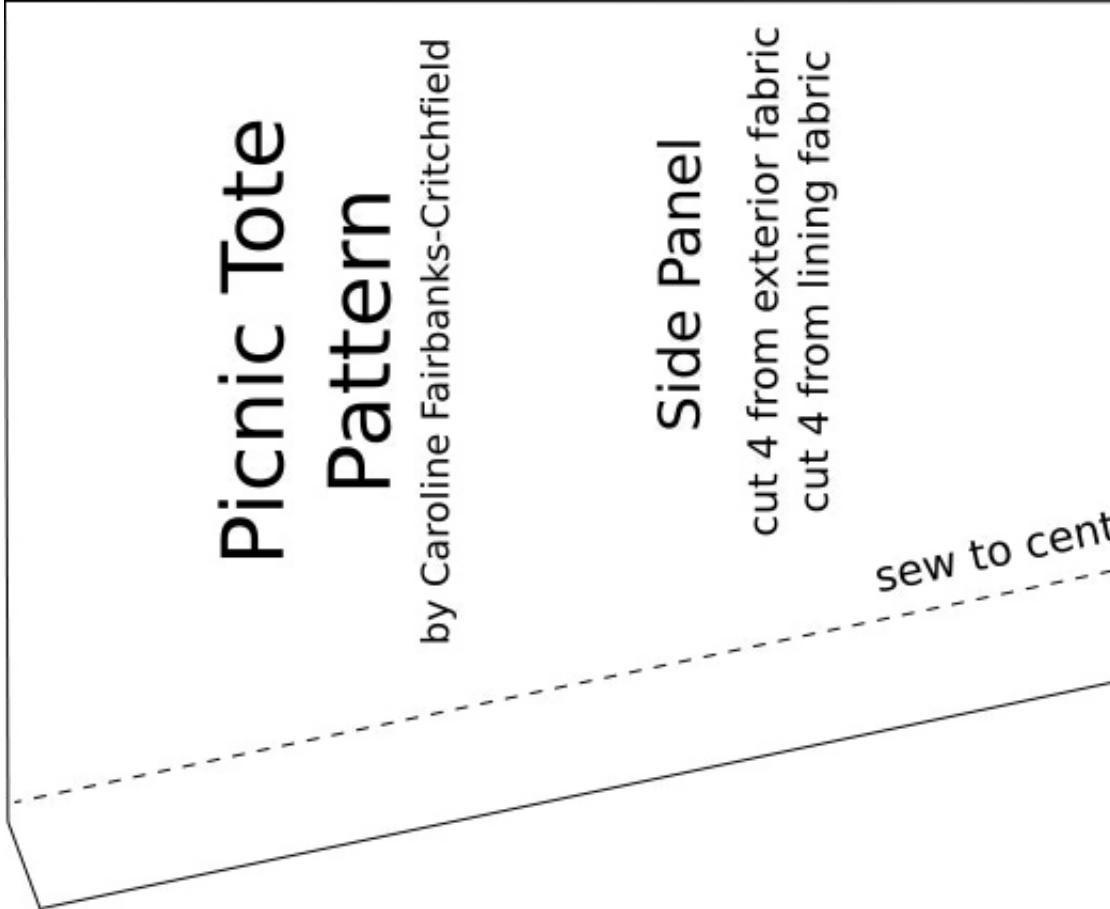
Picnic Tote Pattern

by Caroline Fairbanks-Critchfield

Side Panel

- cut 4 from exterior fabric
- cut 4 from lining fabric

sew to cent



sew panel along this edge

stop sewing
at this point



Picnic Tote Pattern

by Caroline Fairbanks-Critchfield



place this line

Interior Pocket

cut 2 on fold

on fold of fabric

