



# Easy Ruffle Shrug



SEWCANSHE  
inspiring you  
every day

Only a single pattern piece! Plus alternate Super-easy Pleated Ruffle Instructions

# Easy Ruffle Shrug *girl's little jacket pattern*

*by carolina fair designs*

Cover those little bare shoulders or plain t-shirt with this easy knit shrug. The ruffle can be gathered using the traditional method, or pleated and stitched together in one quick and easy step. Instructions for adding optional ties start on page 11.

This top is designed for light- to mid-weight knit fabric with 20-30% stretch across the grain. The examples shown are made with interlock knit and lightweight French terry knit.

Sizes include 12 mo, 2T, 4, 6, 8, 10, and 12.

As sized, this shrug is loose fitting. If a child is in between sizes, going either a size down or up will produce great results.



## You will need

- about  $\frac{3}{4}$  yard knit fabric (see chart at right)
- a medium to heavy duty ball-point needle for sewing on knit fabric
- $\frac{5}{8}$ " to 1.25" grosgrain ribbon **or** 1" single fold bias trim
- coordinating thread

The pattern and instructions contained in this eBook are for personal use only. No part may be copied or transferred electronically unless permission is given. Hand-made garments created by the purchaser may be sold. U.S. and international copyright laws apply. Any questions may be directed to:  
[caroline@carolinafairdesigns.com](mailto:caroline@carolinafairdesigns.com)

Size	Amount of fabric needed	Amount of ribbon or trim needed
12	$\frac{3}{4}$ yd	2 yds
10	$\frac{3}{4}$ yd	2 yds
8	$\frac{3}{4}$ yd	2 yds
6	$\frac{3}{4}$ yd	2 yds
4	$\frac{3}{4}$ yd	1 $\frac{1}{2}$ yds
2T	$\frac{3}{4}$ yd	1 $\frac{1}{2}$ yds
12 mo.	$\frac{1}{2}$ yd	1 $\frac{1}{2}$ yds

### *Printing Instructions:*

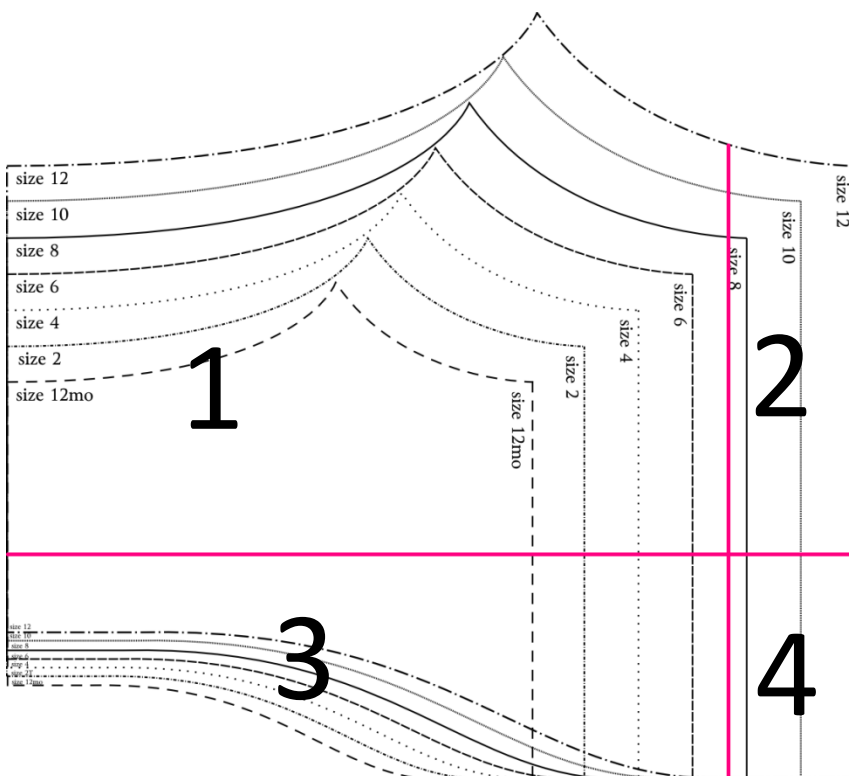
*The pattern piece will print out on regular paper and must be taped together.*

*Print pages 13-15.*

*After you click print, make sure that the 'page scaling' option is set to 'none.' This will ensure that the pattern pieces are not enlarged or reduced. There is a one inch square on page 11 so you can check to make sure.*

### *Prepare your pattern piece:*

The pattern piece for this shrug must be printed and taped together before you can cut out your fabric. The pattern parts are on pages 13-15. Printing in black and white to save ink is fine.



Notice that there both bright pink and black lines.

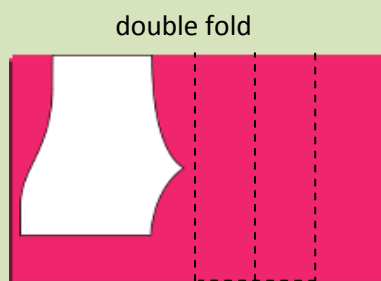
Tape the pages together along the pink lines. Cut the desired size out along the black dotted lines.

(this 'key to the puzzle' is also on page 12)

## Step 1. Cut

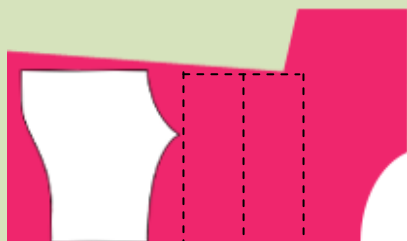
### Pattern Piece: Cut 2.

Wash and then refold your fabric so that you have a double fold on one side and will cut through 4 layers at once.



Pin and cut.

The smaller sizes can also be cut from a larger tee shirt. (You will have extra seams in your ruffle and need to make do with whatever length ruffle strips you can cut).

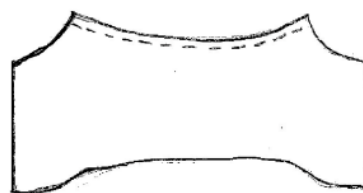


**Ruffle strips: use chart to cut.**

Use scissors or a rotary cutter to cut rectangular strips for the ruffle. The measurements should be as follows:

Shrug size	Rectangle measurements for gathered ruffle	For easy pleated ruffle
12	44" x 5" (cut 2)	width x 5" (cut 2)
10	42" x 5" (cut 2)	width x 5" (cut 2)
8	40" x 5" (cut 2)	width x 5" (cut 2)
6	38" x 5" (cut 2)	width x 5" (cut 2)
4	36" x 5" (cut 2)	width x 5" (cut 2)
2	34" x 4" (cut 2)	width x 4" (cut 2)
12mo.	60" x 4" (cut 1)	width x 4" (cut 2)

## Step 2. Stitch the back seam.



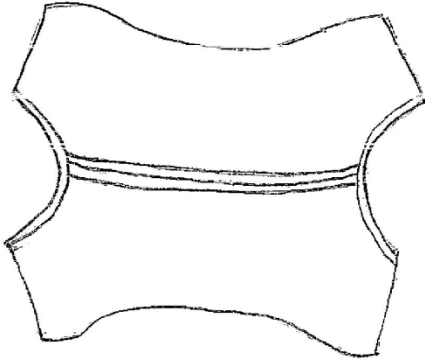
- 1 Using a 1/4" seam allowance, pin and stitch (or serge) the two layers right sides together along the top curved edge, which will be your back seam. Finish the edges, if desired.

This seam needs to be stretchable, so set your machine to a zig-zag stitch, about 1mm wide and 2.5mm long.

(Or use a special stretch stitch or serger).



2

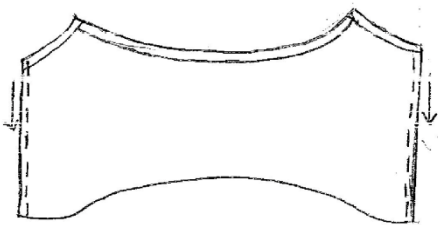


Now open up the jacket and stitch a  $\frac{1}{4}$ " hem on either armhole, as shown.



You should still be using a stretchable (narrow zig zag) stitch here.

3



Re-fold jacket along back seam, right sides together, matching armhole curves and side edges. Stitch from armholes downward.



Be sure the armhole edges match up evenly at the top.

### Step 3. Add the Ruffle (see p. 9 for super easy pleated ruffle method)

1



Stitch the rectangular strips, right sides together, at both ends to form a long tube.

(The size 12mo strip will be stitched to itself at one end to form a tube.)



A regular straight stitch can be used for these seams.

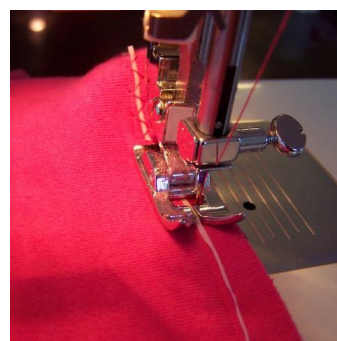
2



Fold the tube lengthwise, wrong sides together with the seam allowances on the inside.

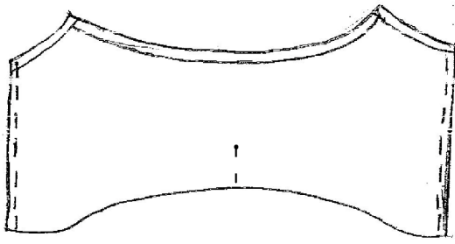
Sew a gathering stitch  $\frac{3}{8}$ " from the top raw edges.

Then place pins to mark the center between each seam.



With all that gathering, this would be a great place to use the floss-gathering method. Stitch a large wide zig zag stitch over a piece of floss or string. (Pull on the floss to gather).

3



Use two pins to mark the center of both sides of the jacket between the side seams.



Turn jacket right sides out. Pin ruffle to jacket.

Match the pins on the jacket (marking the center of the jacket between the seams) to the seams on the ruffle, and the pins on the ruffle (marking the centers of the ruffle between the seams) to the seams on the jacket.

4



Adjust gathers. Pin.



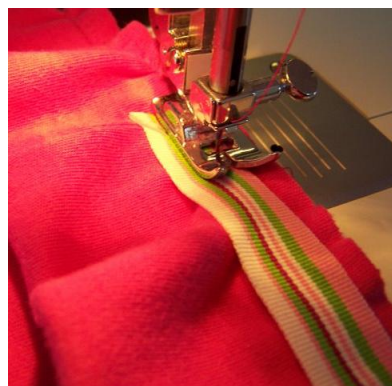
Stitch ruffle to jacket using a  $\frac{1}{2}$ " seam allowance. A straight (non-stretchy) seam may be used here since you will reinforce it with ribbon or bias trim.

## Step 4. Apply Ribbon or Trim.

1

Trim raw edges of jacket and ruffle to an even  $\frac{1}{4}$ ". Pin the edge of the ribbon just over stitching and fold the top edge of the ribbon back about  $\frac{1}{4}$ ". Stitch on top of the ribbon over the stitching in step 4.

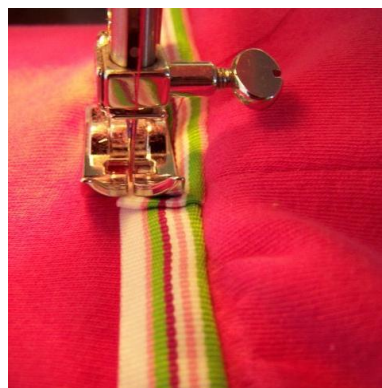
(If the ribbon is not double-sided, the right side of the ribbon should be facing down against the ruffle.)



2

Open out the ruffle and fold the ribbon back over the trimmed seam allowance.

Stitch on the ribbon close to the edge.



### Variation:

1" single fold bias trim can also be used to cover the seam allowance.



# Super-easy Pleated Ruffle

(pleat and attach in one step)

1

Cut out and assemble the shrug using Steps 1 and 2. Note that when you cut out your ruffle strips for this method, you will be cutting off long strips across the width of the fabric. (see cutting chart)



2

Stitch the ruffle strips together along the short ends and fold with wrong sides together.



3

Trim one end of the strip to make a curved edge.



4

Fold the first pleat in the ruffle strip. Make it about 1 ½ inches from the end and ½ inch deep.



5

Pin the ruffle strip to the jacket in the center between the arm holes (either top or bottom works fine).





**6** Begin stitching the ruffle to the jacket using a  $\frac{1}{2}$ " seam allowance. Using a stretch stitch here does not matter.



**7** With your needle down in a pleat, set up your next pleat about 2 inches away and  $\frac{1}{2}$ " deep. Continue around jacket.



**8** I like to hide the seam in the ruffle strip inside a pleat, even if that means one pleat is not spaced exactly right.

**9**

Continue making pleats until you are close to or barely overlapping your starting curve.



**10**

Make one more pleat, overlapping the ruffle and angling your strip to the right and away from the jacket. Secure stitching and trim away excess fabric.

Trim raw edges to  $\frac{1}{4}$ " and apply ribbon or bias trim using Step 4 above.



## Optional Ribbon Ties

1

You will need 1 ½ yards of ribbon. 1 to 2 inch wide satin or grosgrain ribbon works best.

Cut the ribbon in half so you have two pieces.

Cut out and assemble the shrug using Steps 1 through 3 (or 1, 2, and the easy pleated ruffle method).



2

Pin one ribbon end on the shrug, over the ruffle with the center of the ribbon 2 to 3 inches\* above the sleeve seam. Repeat on opposite side of shrug for other piece of ribbon.

If the ribbon is not double-sided, lay it right side down against the shrug.

\* For sizes 12 mo. and 2T, place the ribbon 2" above the sleeve seam; for sizes 4 and 6 place it 2 ½" above the seam; and for sizes 8-12, place it 3" above the seam.

3

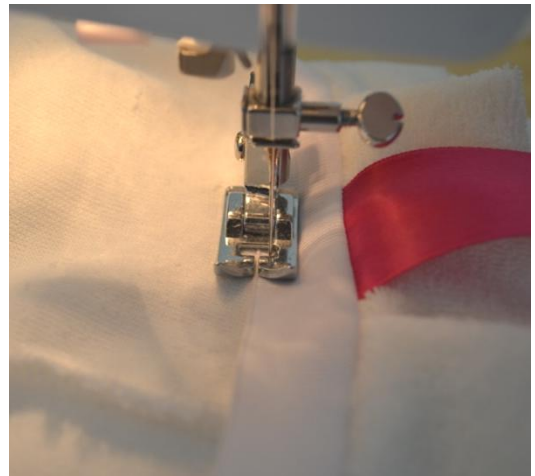
Follow Step 4 (p.8) for applying ribbon or bias trim to the raw edges.

When you come to your ties, carefully remove the pin and hold the ribbon tie in place so you can stitch the grosgrain ribbon or bias trim used to cover your raw edges over it.



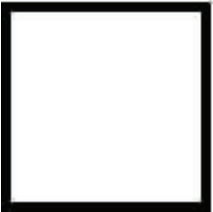
4

When you stitch down the other edge of your trim (Step 4.2), the ribbon tie should look nice and neat, like this.

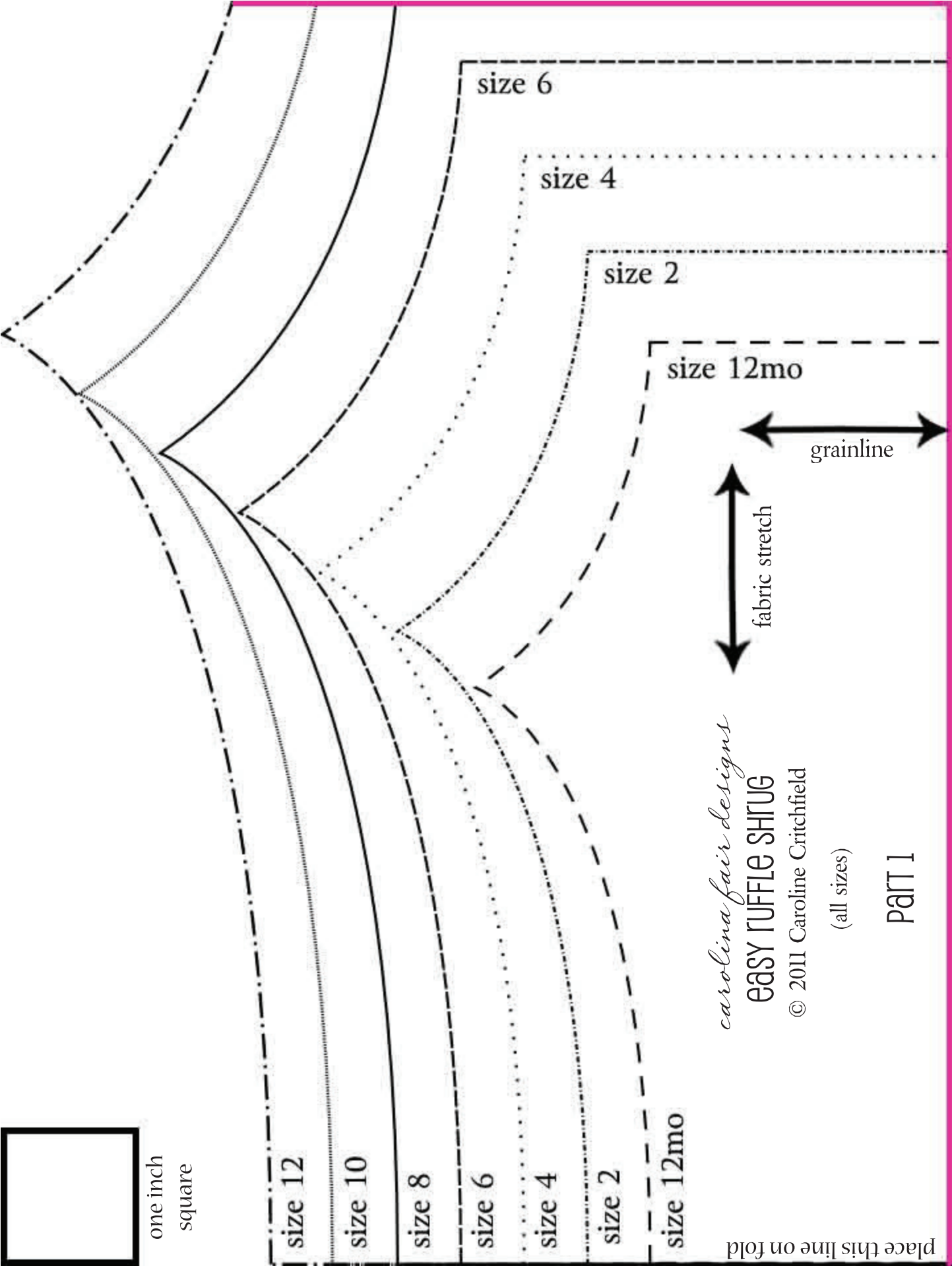


5

Tie ties in bow in front, and trim length, if desired. Treat ribbon ends to prevent fraying with a lighter or anti-fray adhesive.



one inch  
square



place this line on fold

*carolina fair designs*

**EASY RUFFLE SHRUG**

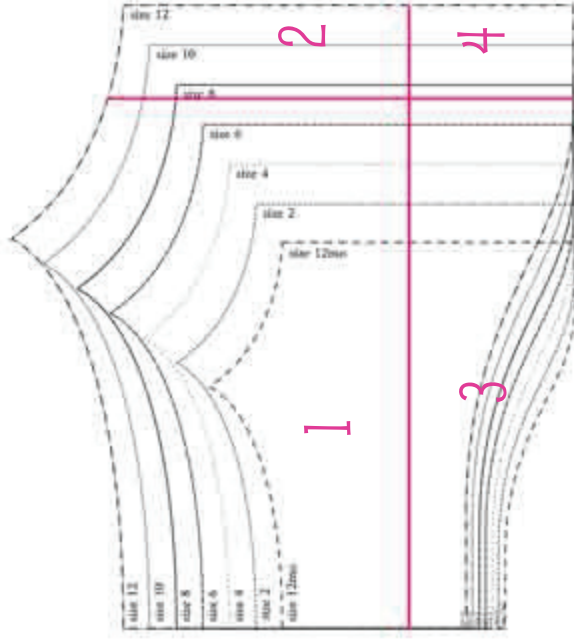
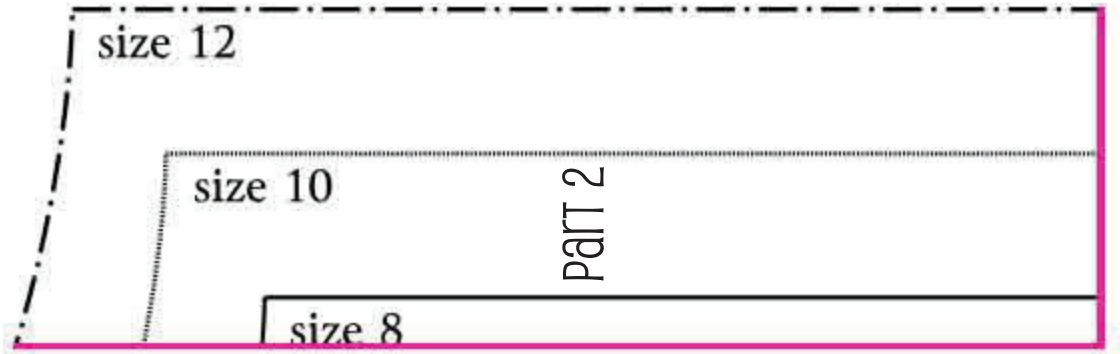
© 2011 Caroline Critchfield

(all sizes)

**PART 1**



*carolina fair designs*  
**EASY RUFFLE SHRUG**  
 © 2011 Caroline Critchfield



*key to the puzzle ;)*



*carolina fair designs*  
**EASY RUFFLE SHRUG**  
© 2011 Caroline Critchfield

