



Know your Presser Feet

(will vary by sewing machine)



Zig-zag or all-purpose foot - Use for most utility sewing from straight stitch to zig-zag stitching.



Clear satin stitch or embroidery foot - the open toe and clear plastic allow you to easily see your stitches.



Zipper foot - used for inserting zippers. You can also use it to attach piping or decorative cording.



Invisible zipper foot - specialty foot with two grooves on the bottom that guide the zipper teeth.



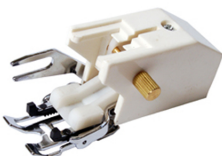
Sliding buttonhole foot - plastic and metal sliding foot for stitching automatic buttonholes.



1/4 inch foot - used for piecing quilt blocks, sewing narrow 1/4-inch seams and topstitching.



Stitch-in-the-ditch foot - helps you achieve perfect stitches on the top of your quilt. The guide rides smoothly along the seam for perfect "stitching in the ditch".



Walking foot - has a set of feed dogs to help feed multiple layers evenly without shifting. Wonderful for fabrics that stretch or slip easily.

SewCANShe.com