

tape top of hat here

*Boot cuff*  
cut 2 from fur

*Arm*  
cut 2



Copyright belongs to SewCanShe.  
If you receive this pattern from any  
other source, it is unauthorized.  
Please support independent makers.

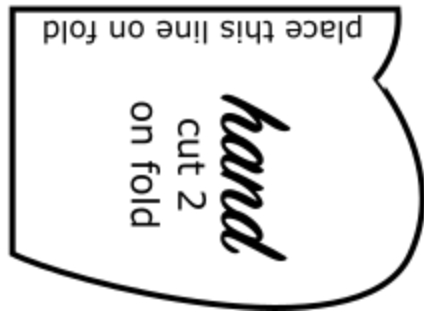
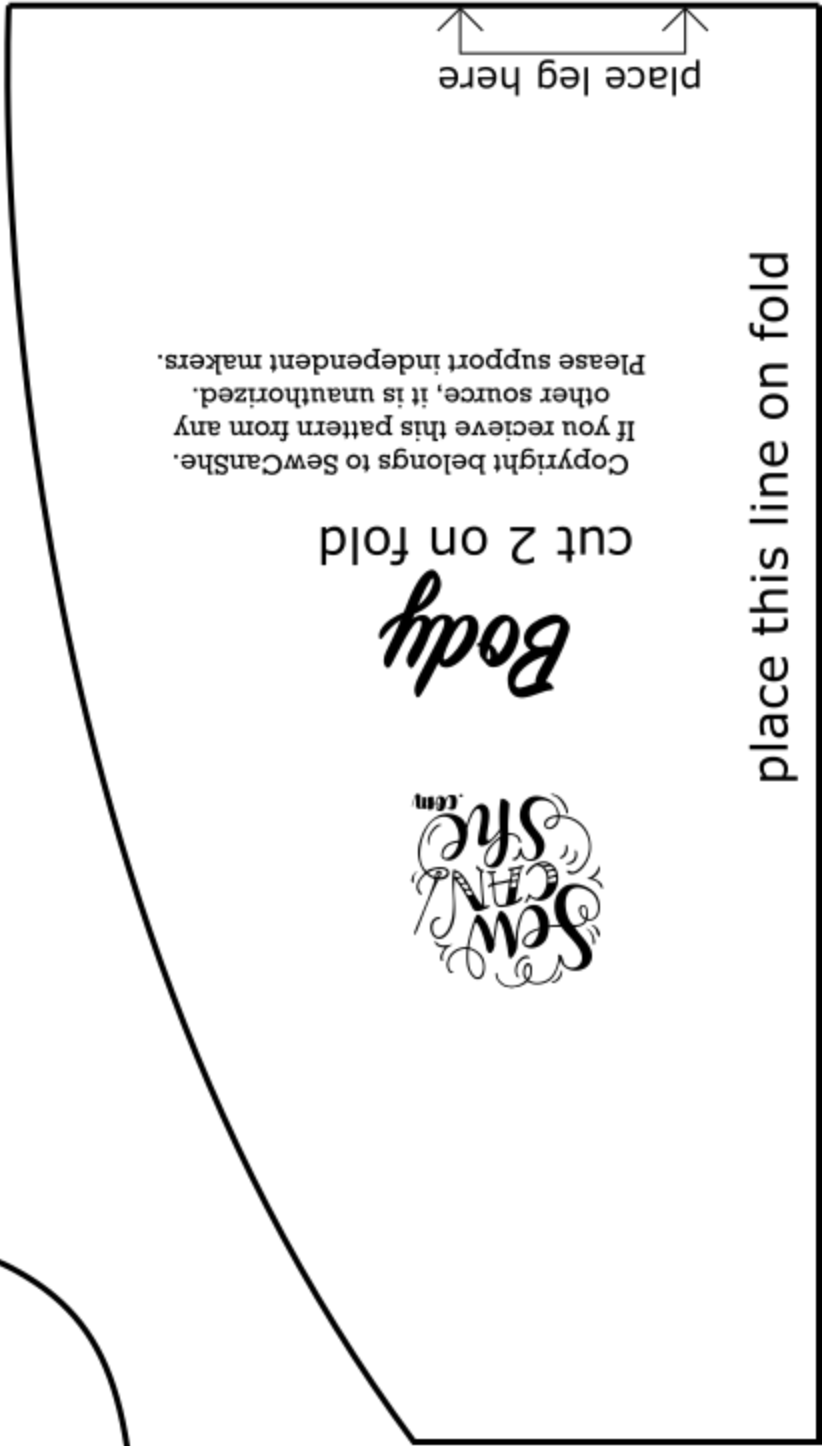
*Hat*  
cut 1 on fold  
updated 2021

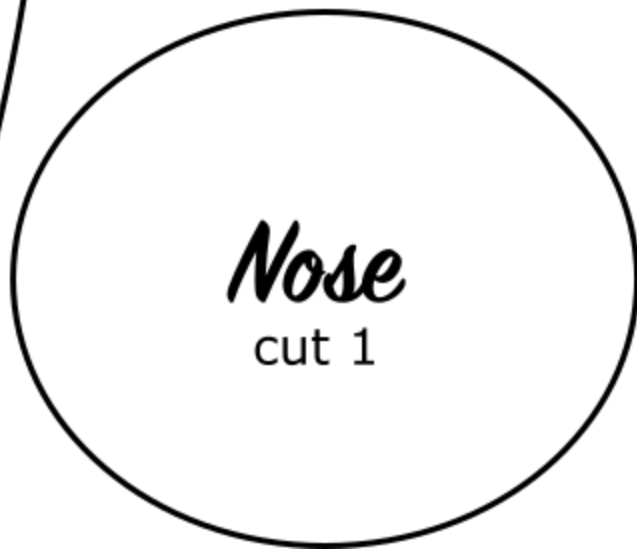
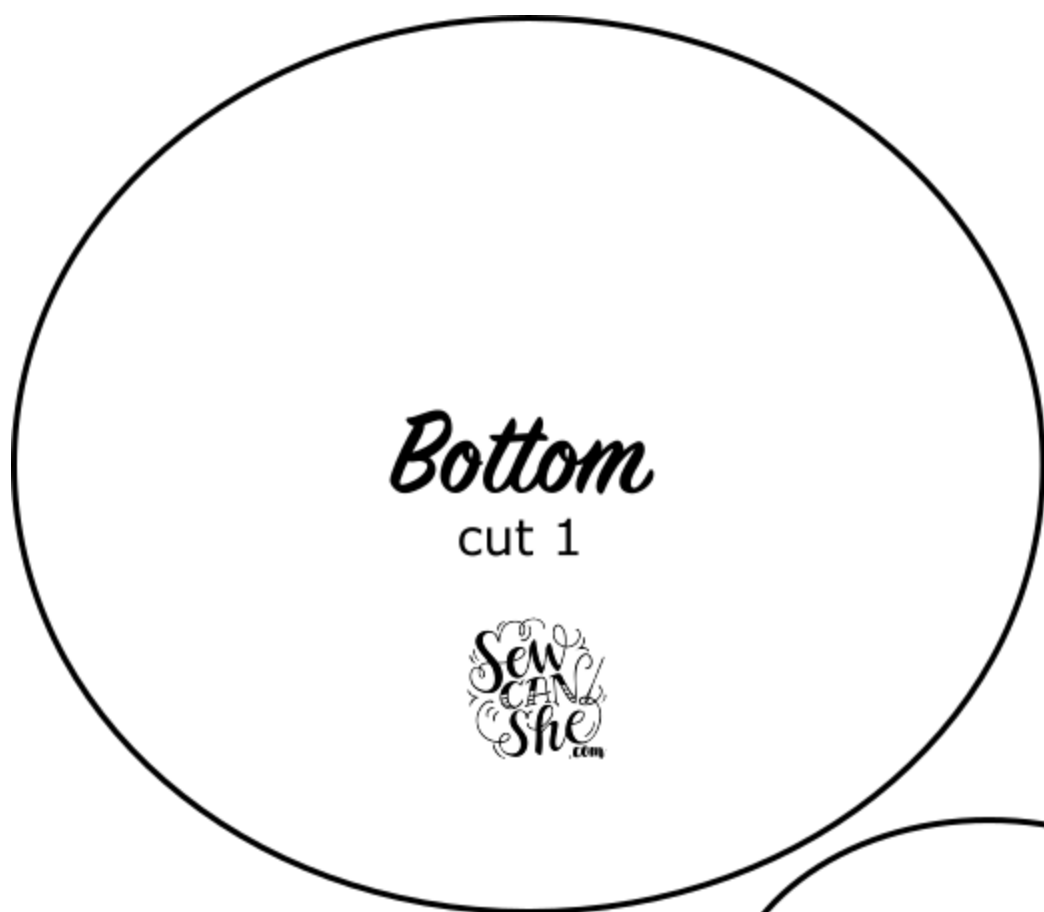
tape to hat here

(top of hat)

1"  
Square  
(measure  
outside  
edges)

place this line on fold





*Long Beard*  
cut 1 from fur

